

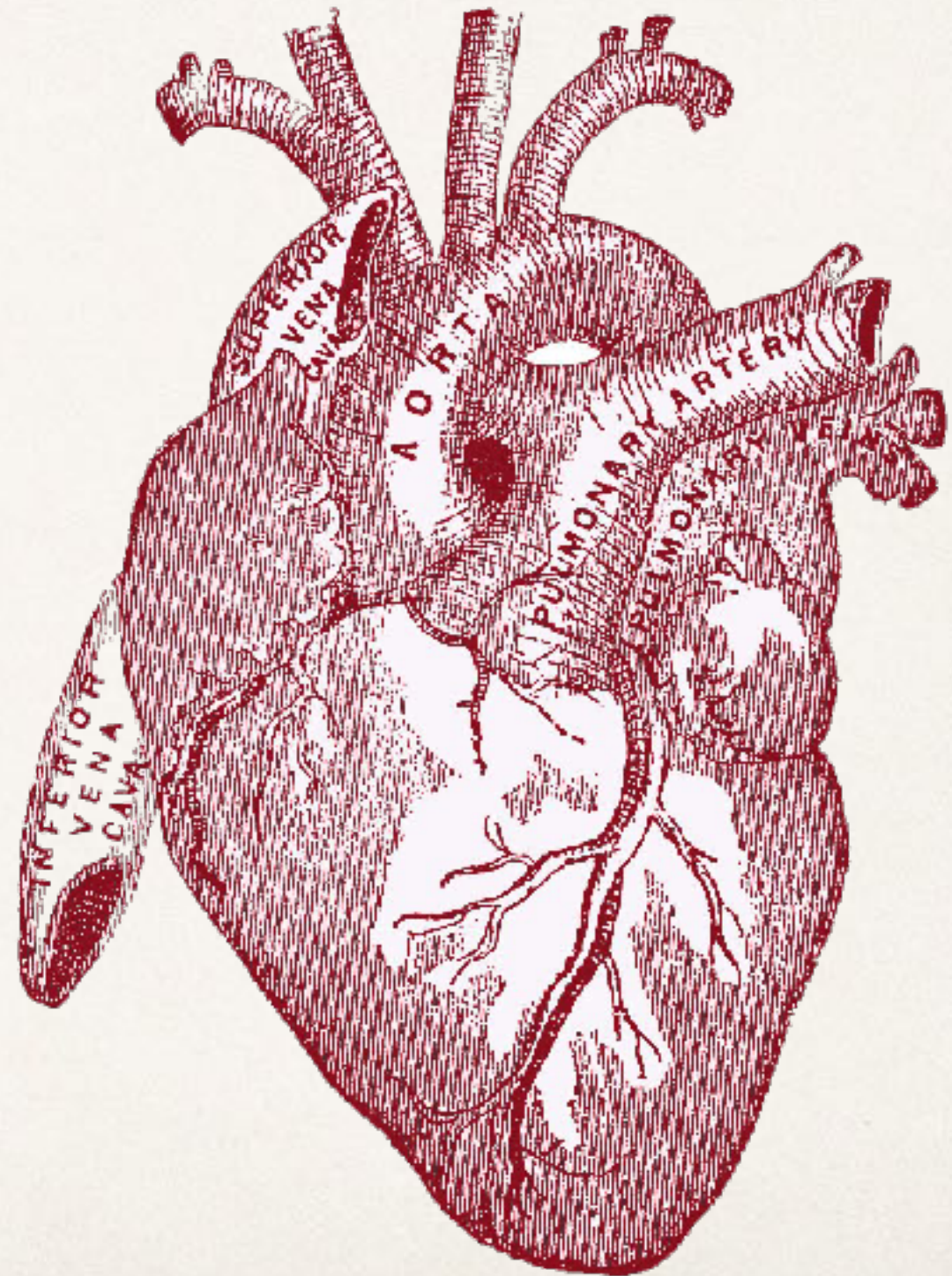


# Redeeming the Dysfunctional Team

It All Comes Down to Love

---

# Dysfunctional Team — CCRN





# Warning Signs:

---

1. Disengagement
2. Lack of Discipleship



# Are You Part of the Issue?

---

- ❖ Personality clash?
- ❖ Become disengaged?
- ❖ Jaded relationship with Jesus?
- ❖ Being disciplined?
- ❖ Making disciples?





# Generations



“We lead out of who we are...  
but we must lead who we have.”



# How do I learn more about my team members?

---

- ❖ FREE DISC:

<https://healthygrowingchurches.com/assessments/free-assessments/>

- ❖ FREE Love Languages:

[www.5lovelanguages.com/profile/](http://www.5lovelanguages.com/profile/) .

# Vulnerability

---

- ❖ Definition: Make yourself capable or susceptible to being wounded; you make yourself open to moral attack, criticism, and even temptation. —Webster's Dictionary
- ❖ Birthplace of creativity and change. — Brené Brown
- ❖ Strengthens your bonds with your team, because your team can then better identify with you.



# Vulnerability

---

## Paul and Barnabas



“<sup>15</sup> This is a trustworthy saying, and everyone should accept it: “Christ Jesus came into the world to save sinners”—and I am the worst of them all. <sup>16</sup> But God had mercy on me so that Christ Jesus could use me as a prime example of his great patience with even the worst sinners. Then others will realize that they, too, can believe in him and receive eternal life.”

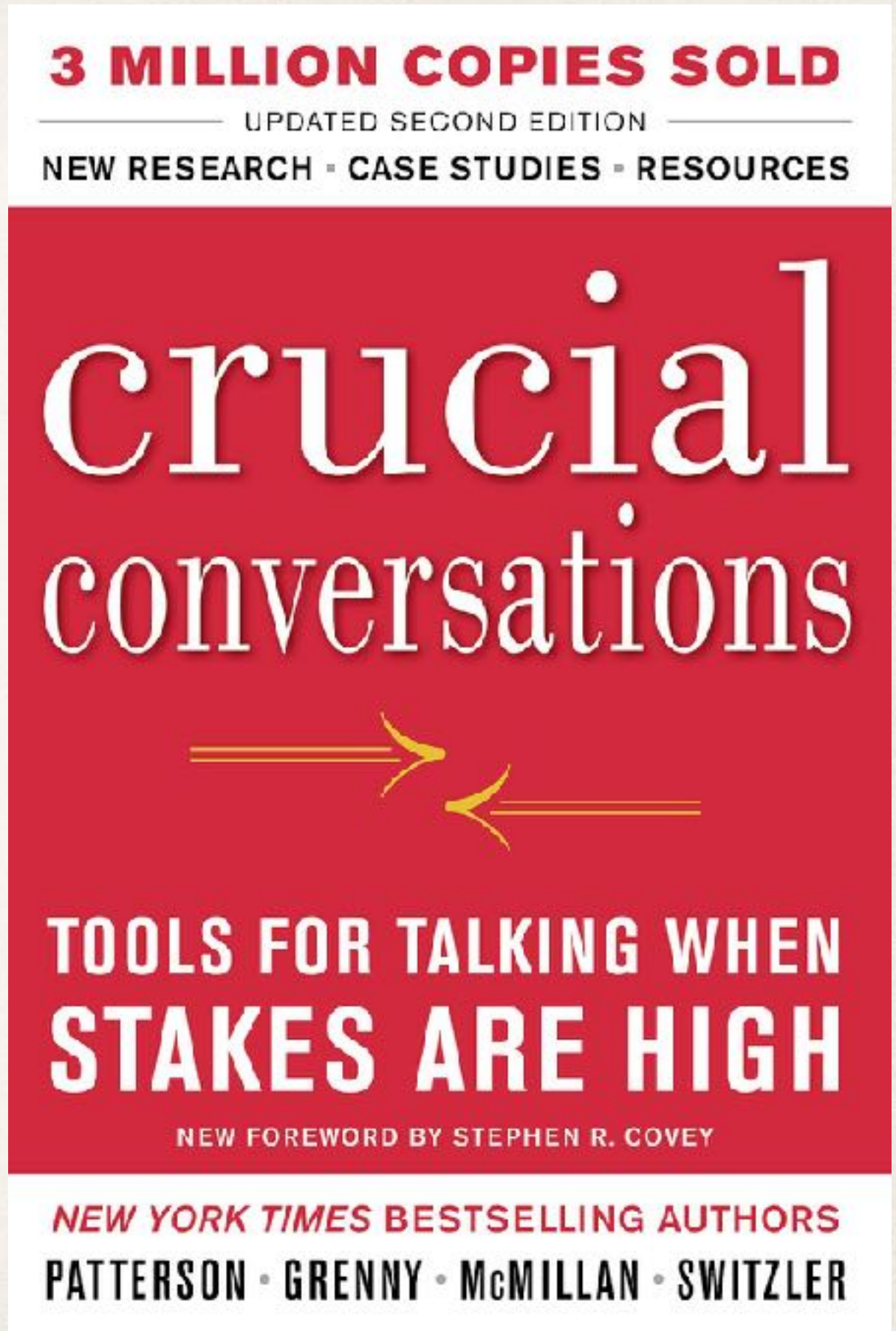
*1 Timothy 1:15-16*



# Crucial Conversations

---

- ❖ Have the difficult talks.
- ❖ Speak the truth in love.



“<sup>15</sup>Instead, we will speak the truth in love, growing in every way more and more like Christ, who is the head of his body, the church. <sup>16</sup>He makes the whole body fit together perfectly.

As each part does its own special work, it helps the other parts grow, so that the whole body is healthy and growing and full of love.”

*Ephesians 4:15-16*



# Speaking the truth in love...

---

1. allows us to grow up and become more like Christ.
2. allows all the pieces and parts of a team to work properly so that the body builds itself up in love.



# It All Comes Down to Love.

---

- ❖ Being intentional about learning more about each of your team members = love
- ❖ Letting our vulnerability show = love
- ❖ Discipling your team = love
- ❖ Understanding generations that are not your own = love
- ❖ Speaking the truth in love = love

